

# KEL-JUMBO flex pyramid cable entry grommets

for single cables with diameters up to 68 mm / IP54 / UL Type 12



The KEL-JUMBO flex is a flexible cable entry grommet for cables without connectors with a diameter range from 27 - 68 mm. They are ideal for the routing supply cables into the switch cabinets.

Cutting of KEL-JUMBO flex grommets: Cable diameter less 25%. The corresponding diameters are marked on the grommet.

It is recommended that additional strain relief be provided for cables using cable ties.

IP54

UL TYPE  
12

C<sub>RU</sub>US

RIIA

HL3  
EN 45545-2

EN 61373

ECOLAB  
certified

UV  
ISO 4892-2A

RoHS  
compliant

REACH  
COMPLIANCE

Made in  
Germany

## Specifications

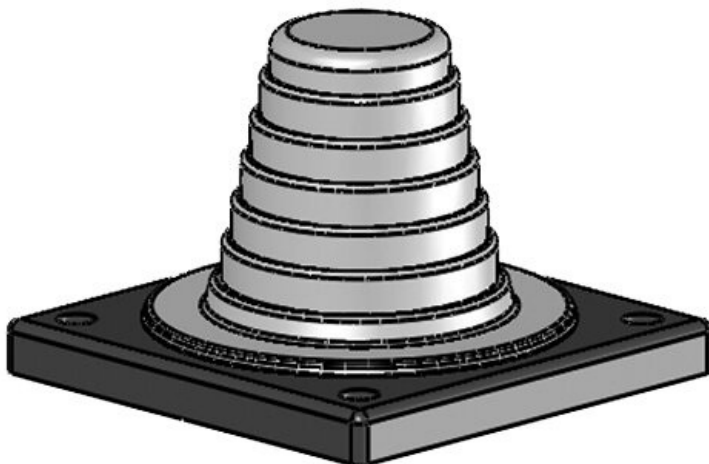
|                       |                                    |
|-----------------------|------------------------------------|
| IP rating (EN 60529)  | IP54                               |
| UL Type (UL 50E)      | UL Type 12                         |
| Material              | Elastomer<br>Base frame: Polyamide |
| Flame class           | UL94-V0, self-extinguishing        |
| Operating temperature | -40 C° to 100 C°                   |
| Properties            | halogen free, silicone free        |
| Mounting options      | Screw type mounting                |

## Advantages & benefits

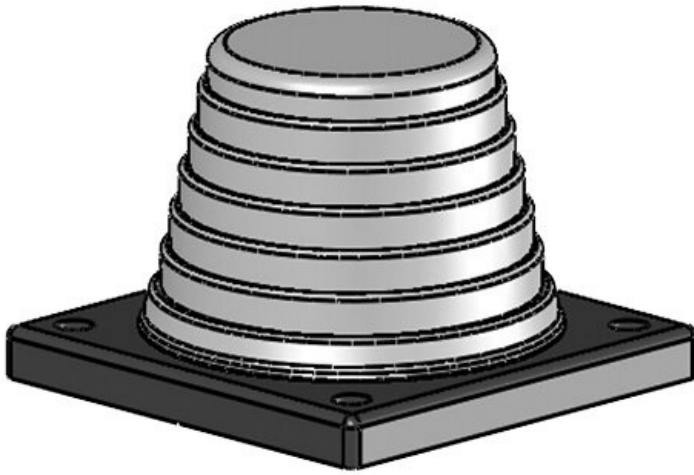
- It is possible to install rigid cables at angles
- Compact installation area (88 × 88 mm)

## Product types & sizes

KEL-JUMBO flex 27-48 gy



|                        |                                |                      |                       |
|------------------------|--------------------------------|----------------------|-----------------------|
| Part No.               | <b>42614</b>                   | Width                | <b>88 mm</b>          |
| EAN                    | <b>4251269309</b>              | Height               | <b>62 mm</b>          |
|                        | <b>021</b>                     | Mounting height      | <b>62 mm</b>          |
| Package quantity       | <b>1</b>                       | Cut-out size, round  | <b>57,6 mm</b>        |
| For max. no. of cables | <b>1</b>                       | No. of screw holes   | <b>4</b>              |
| Max. cable diameter    | <b>48 mm</b>                   | Diam. of screw holes | <b>6,9 mm</b>         |
| Colour                 | <b>grey (similar RAL 7035)</b> | Clamping range       | <b>1 x 27 - 48 mm</b> |
| Length                 | <b>88 mm</b>                   |                      |                       |



|                        |                                |                      |                       |
|------------------------|--------------------------------|----------------------|-----------------------|
| Part No.               | <b>42616</b>                   | Width                | <b>88 mm</b>          |
| EAN                    | <b>4251269309038</b>           | Height               | <b>62 mm</b>          |
| Package quantity       | <b>1</b>                       | Mounting height      | <b>62 mm</b>          |
| For max. no. of cables | <b>1</b>                       | Cut-out size, round  | <b>75,5 mm</b>        |
| Max. cable diameter    | <b>68 mm</b>                   | No. of screw holes   | <b>4</b>              |
| Colour                 | <b>grey (similar RAL 7035)</b> | Diam. of screw holes | <b>6,9 mm</b>         |
| Length                 | <b>88 mm</b>                   | Clamping range       | <b>1 x 47 - 68 mm</b> |